

ORRA Originated Sales	Average Mtg Rate	Total Inventory **	Active With Contract	New Listings	New Contracts	Under Contract	Back on Market	Expired	Withdrawn	Sales Closed	Days on Market
Dec '10	4.92%	14,993		3,444	3,196	8,363	952	1,189	1,039	2,467 *	97 *
Jan '11	4.84%	14,398		3,478	3,747	8,777	1,009	573	1,102	2,041 *	96 *
Feb '11	4.88%	13,480		3,202	3,777	9,223	934	499	1,018	2,170 *	99 *
Mar '11	4.91%	12,533		4,152	4,526	9,510	820	504	1,098	2,613 *	103 *
Apr '11	4.89%	11,480	72	3,391	4,156	9,955	788	458	1,161	2,464 *	104 *
May '11	4.66%	10,969	282	3,145	3,678	10,210	841	396	869	2,483 *	104 *
Jun '11	4.56%	10,559	461	3,204	3,680	10,087	851	485	848	2,611 *	102 *
Jul '11	4.53%	10,349	627	2,912	3,244	9,869	786	399	770	2,294 *	101 *
Aug '11	4.26%	10,055	594	3,264	3,466	9,502	800	378	783	2,500 *	101 *
Sept '11	4.19%	9,931	645	3,193	3,304	9,369	818	381	851	2,243 *	102 *
Oct '11	4.21%	9,973	644	2,997	3,084	8,937	907	324	858	2,132 *	106 *
Nov '11	4.10%	10,136	656	3,045	2,887	8,909	748	246	659	2,027 *	99 *
Dec '11	3.99%	9,732	679	2,641	2,800	8,095	761	609	779	2,125	103
ORRA Originated Sales	Average Mtg Rate	Total Inventory **	Active With Contract	New Listings	New Contracts	Under Contract	Back on Market	Expired	Withdrawn	Sales Closed	Days on Market

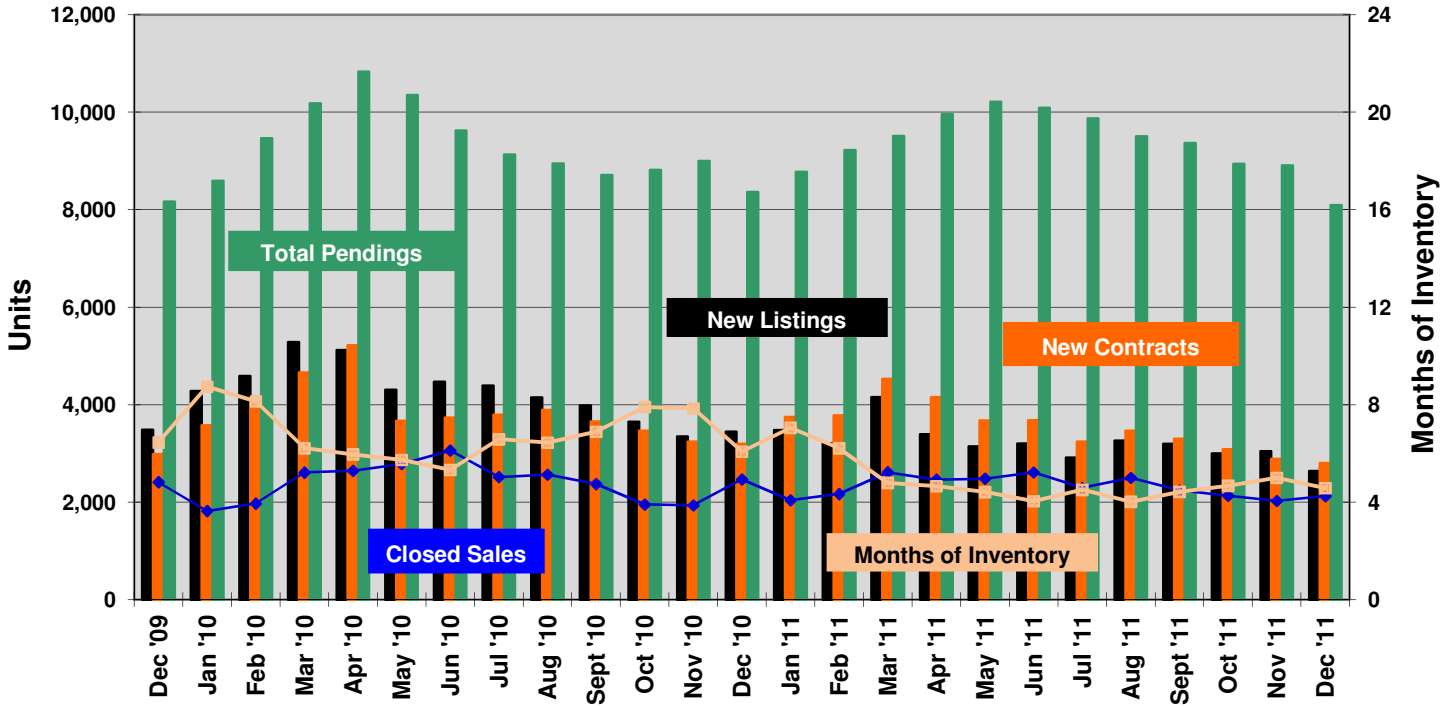
* Corrected monthly sales

** Includes listings with a status of "Active with Contract"

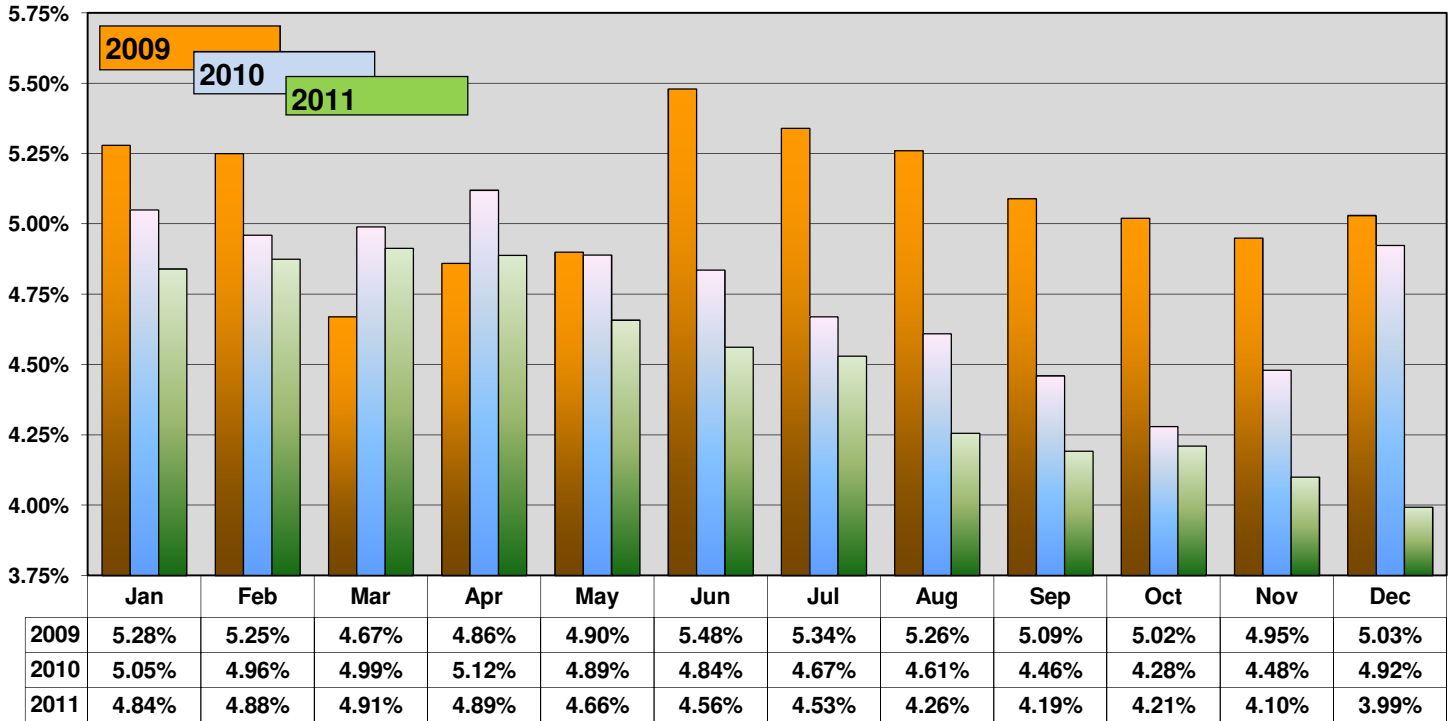
Complete stats and data may be found under Market Info at www.orlrealtor.com. Comments or suggestions? Contact Mike Blinn, Statistician.

Market Pulse™ data represents all listings taken or sold by ORRA brokers, regardless of location and is exclusive to residential property, which includes townhomes, duplexes, single-family homes, and condos. It does not include vacant land or commercial transactions.

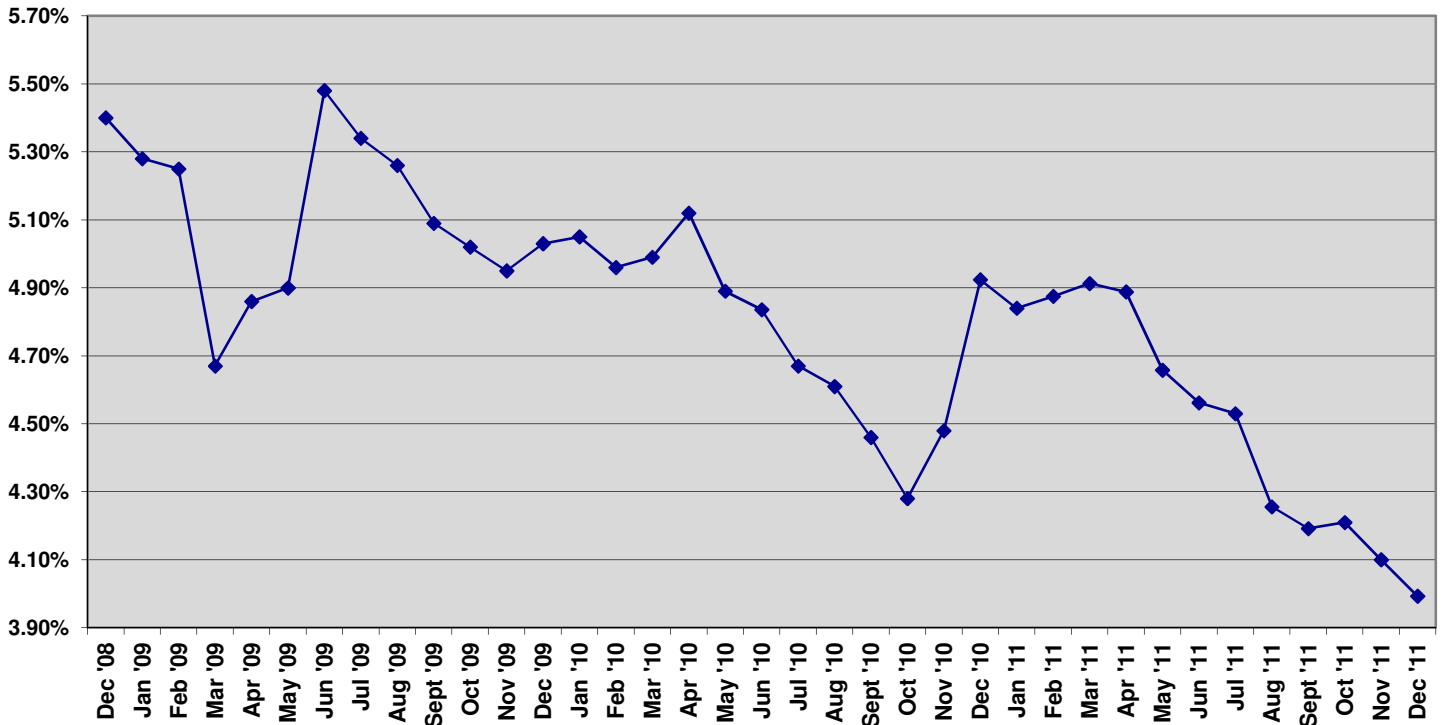
Two-year Running Recap



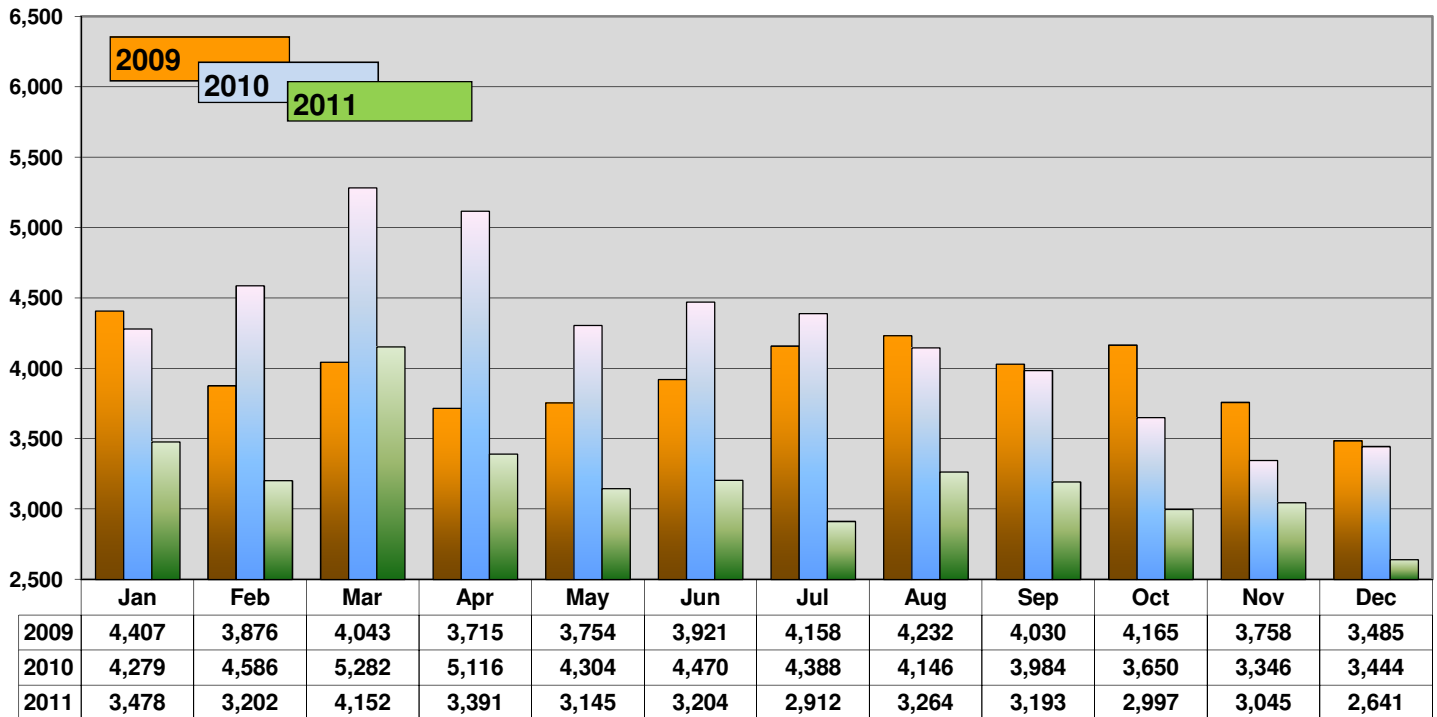
Average Monthly Mortgage Rate



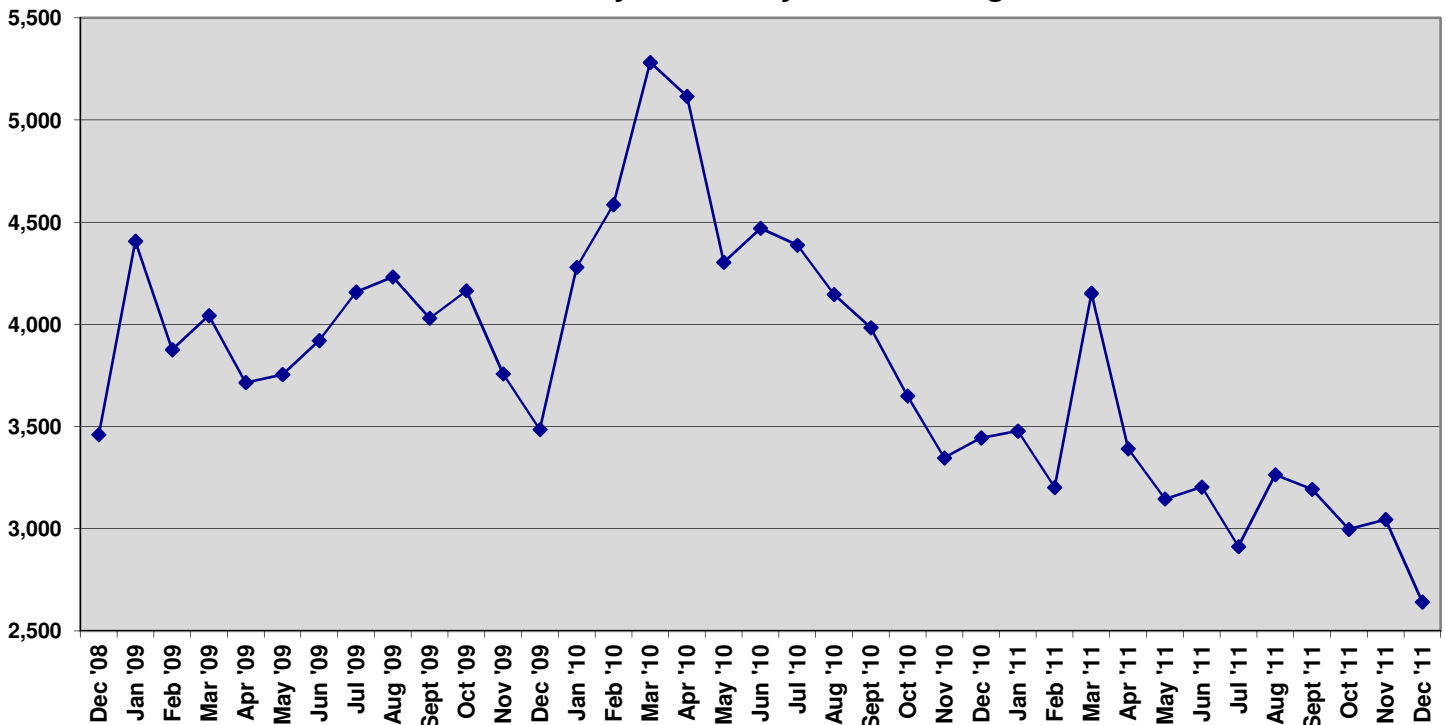
Three-year History - Average Monthly Mortgage Rate



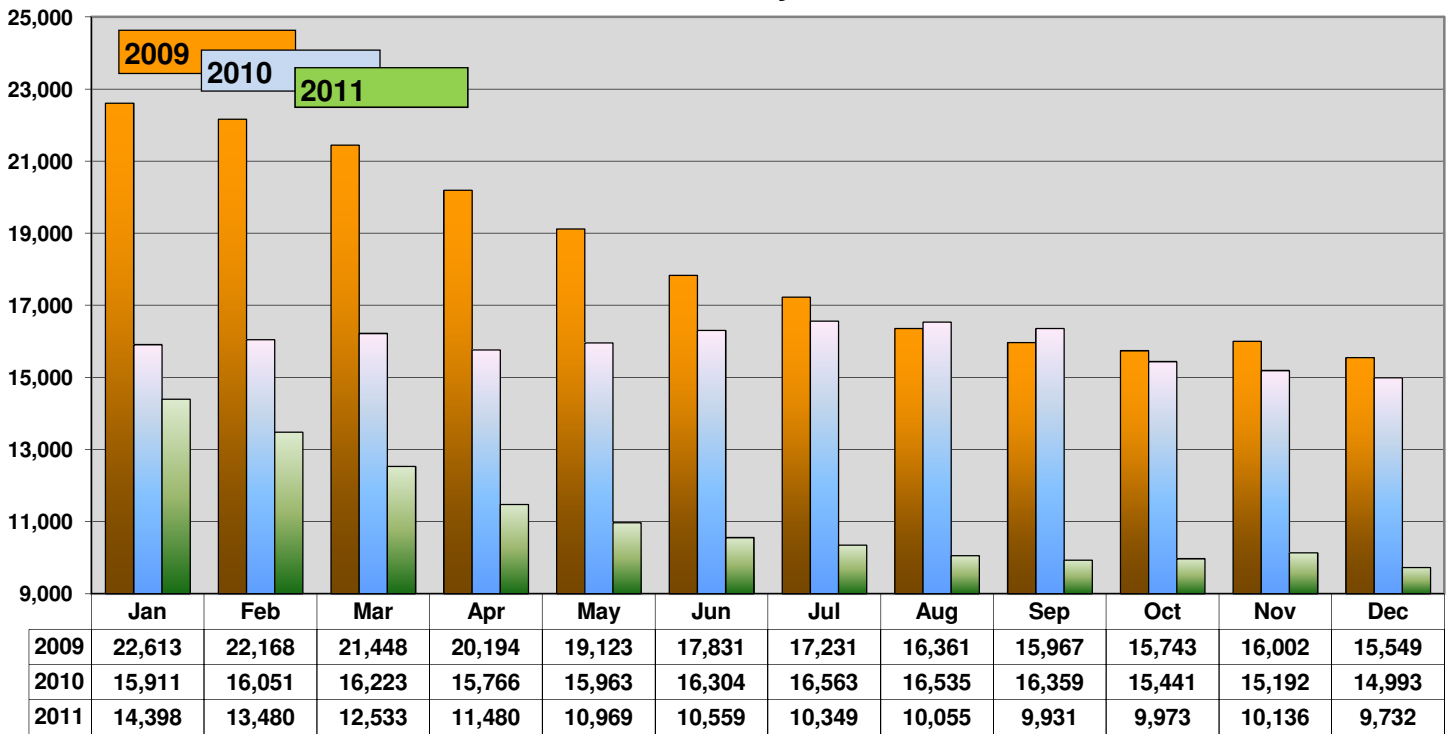
New Listings



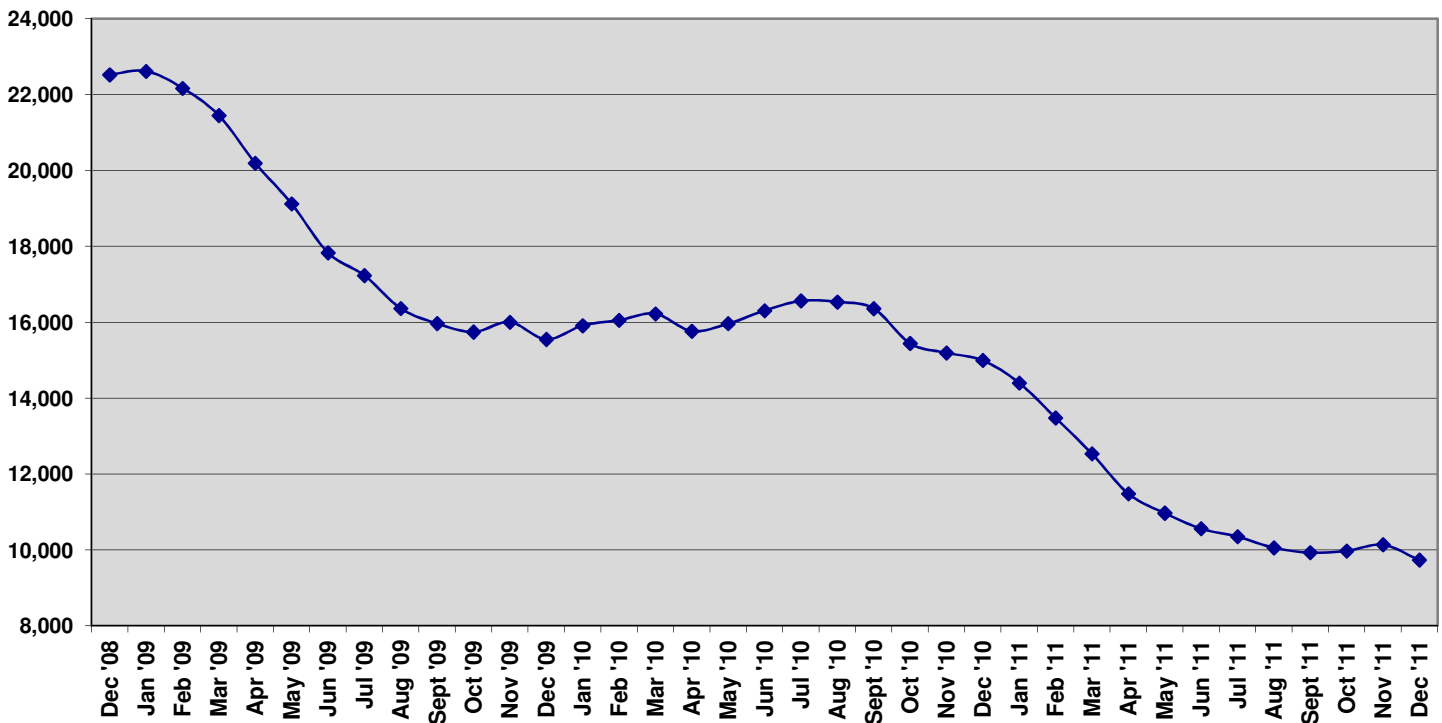
Three-year History - New Listings



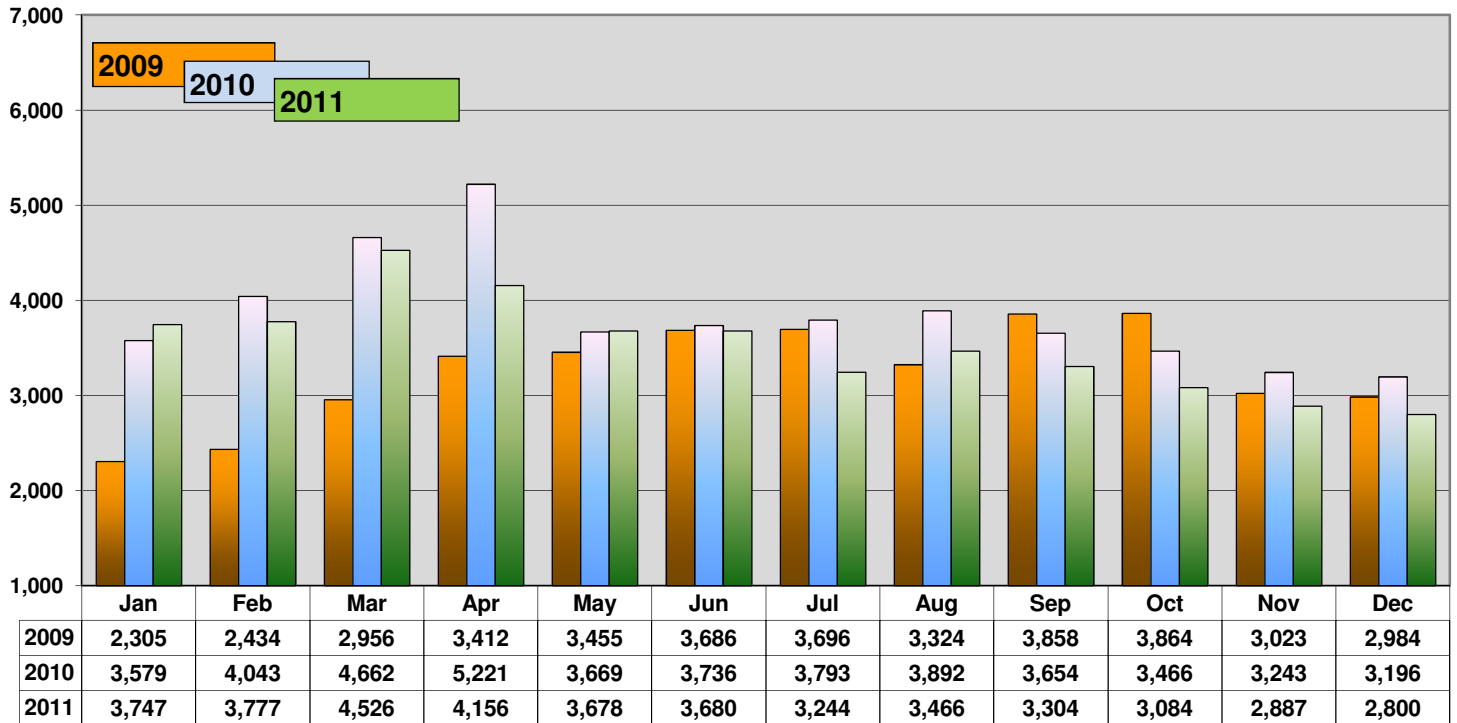
Inventory



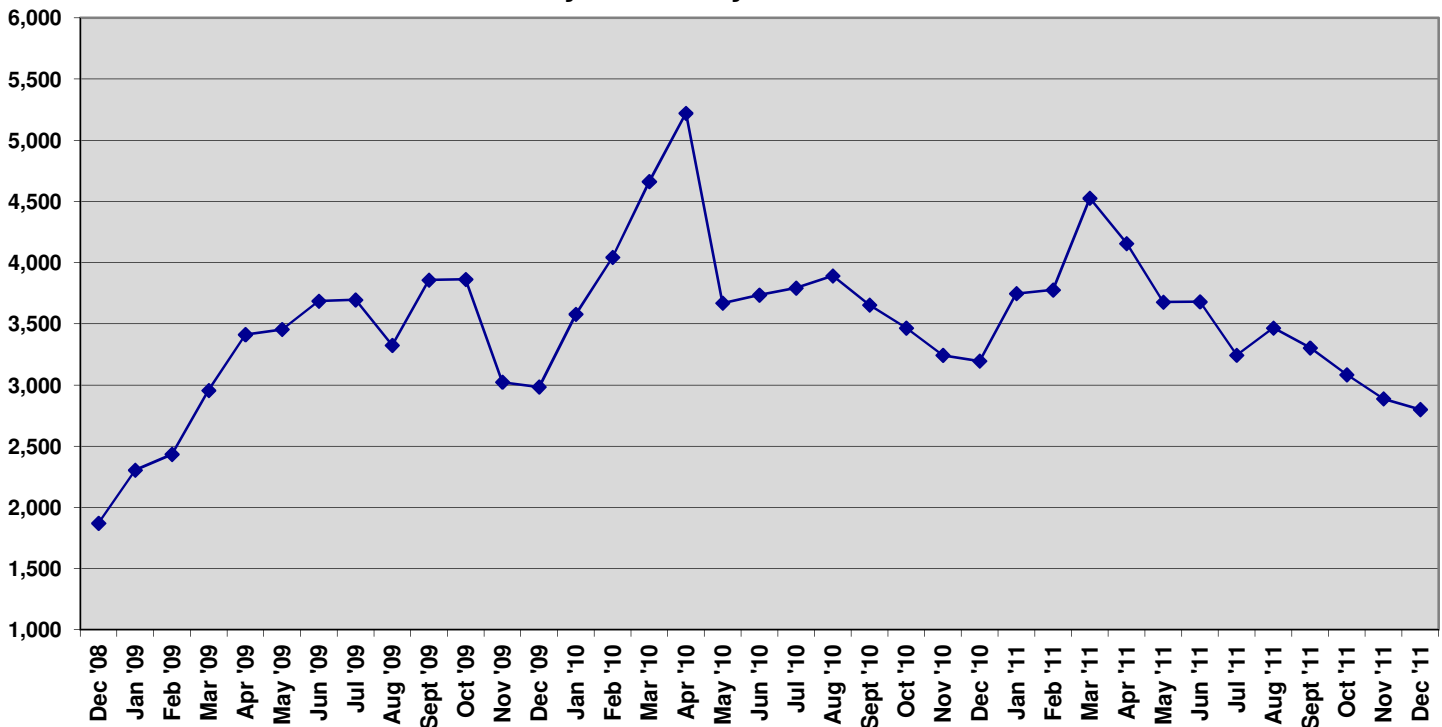
Three-year History - Inventory



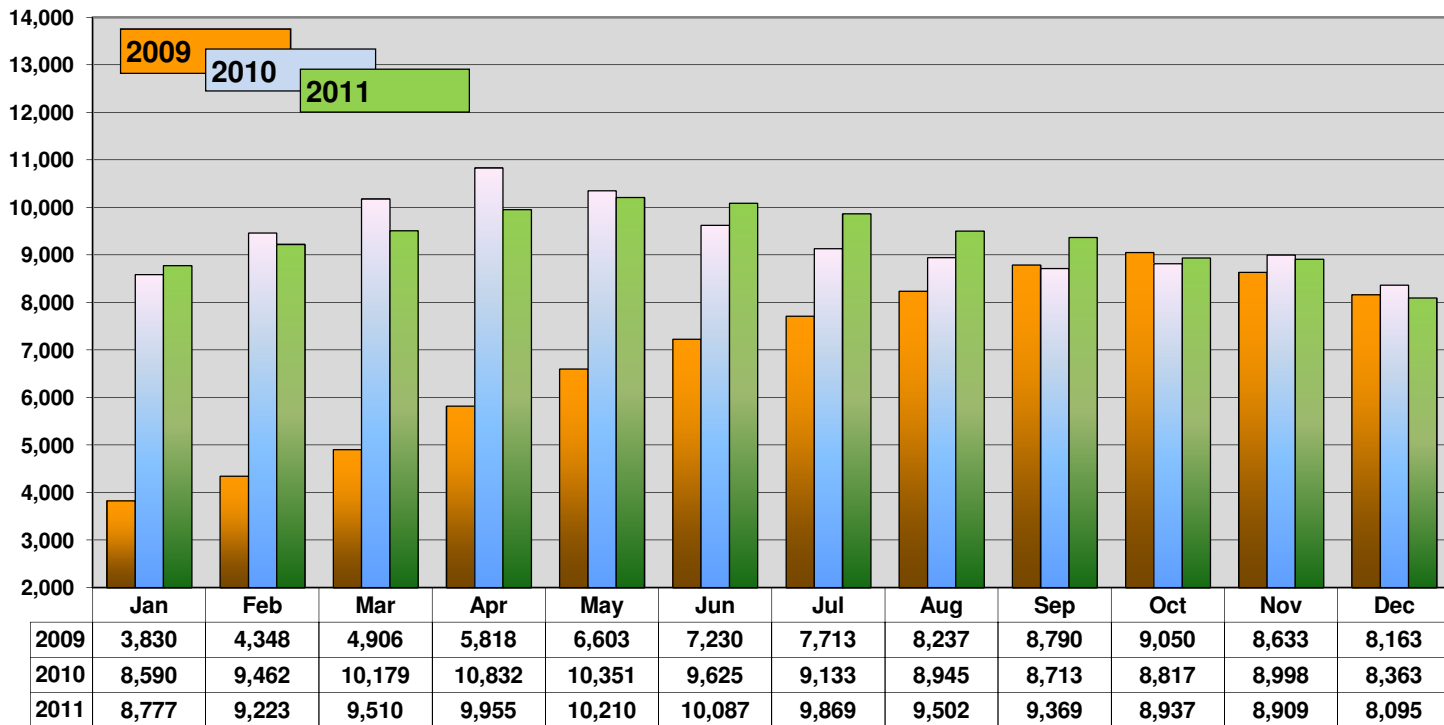
New Contracts - Monthly



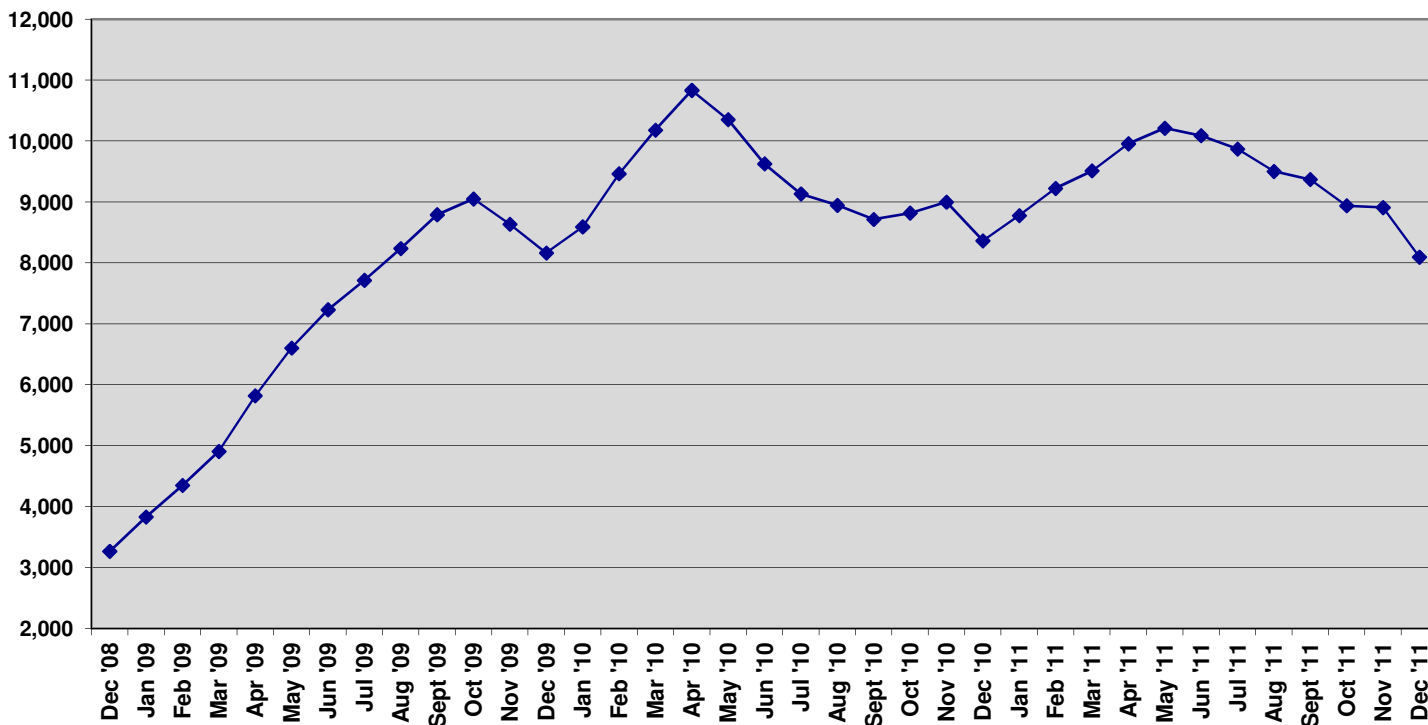
Three-year History - New Contracts



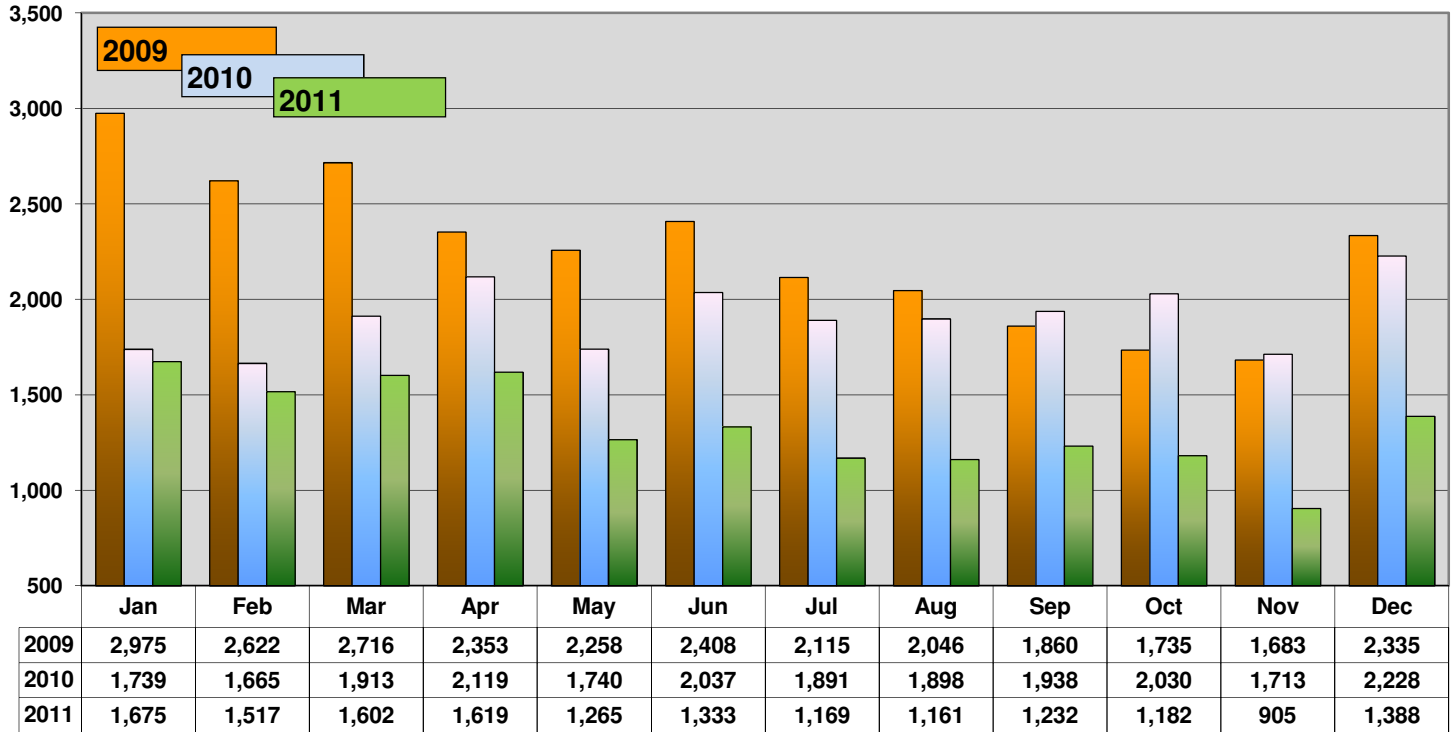
Total Under Contract



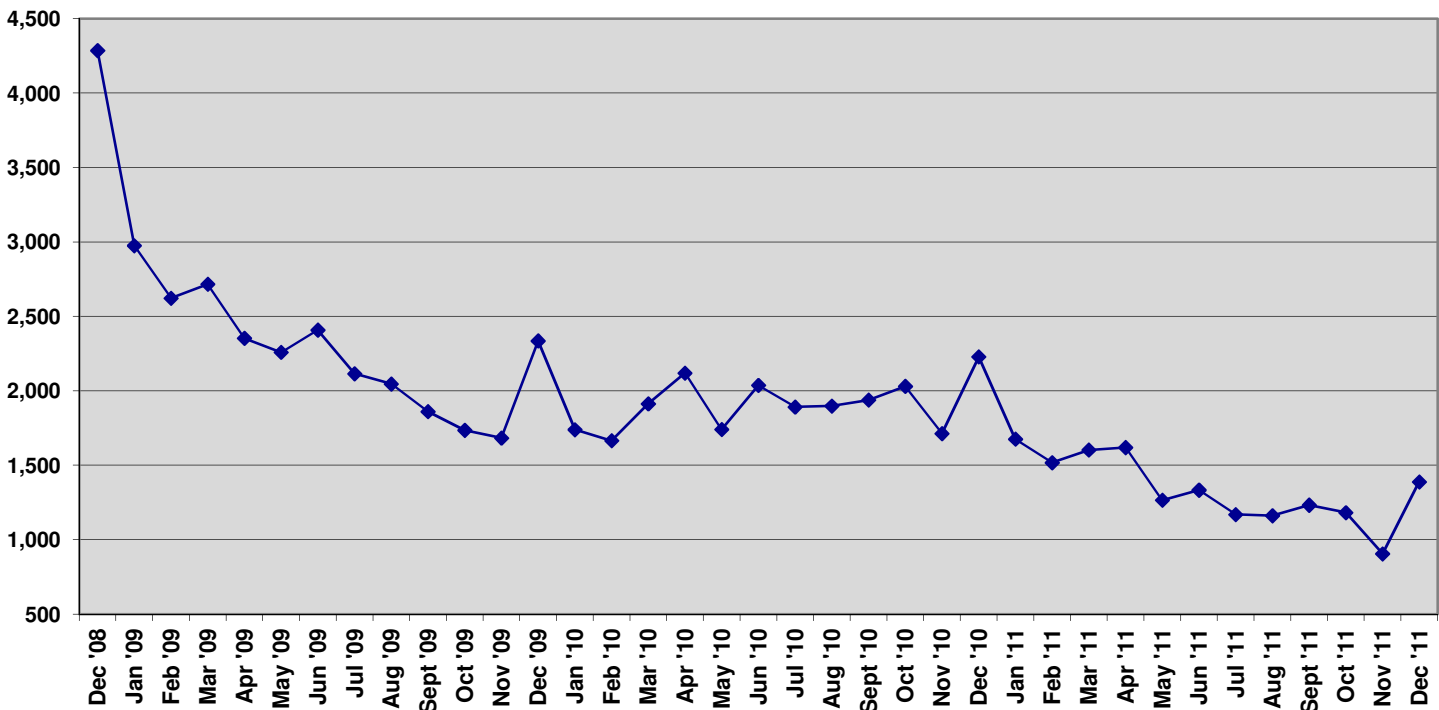
Three-year History - Monthly Total Under Contract



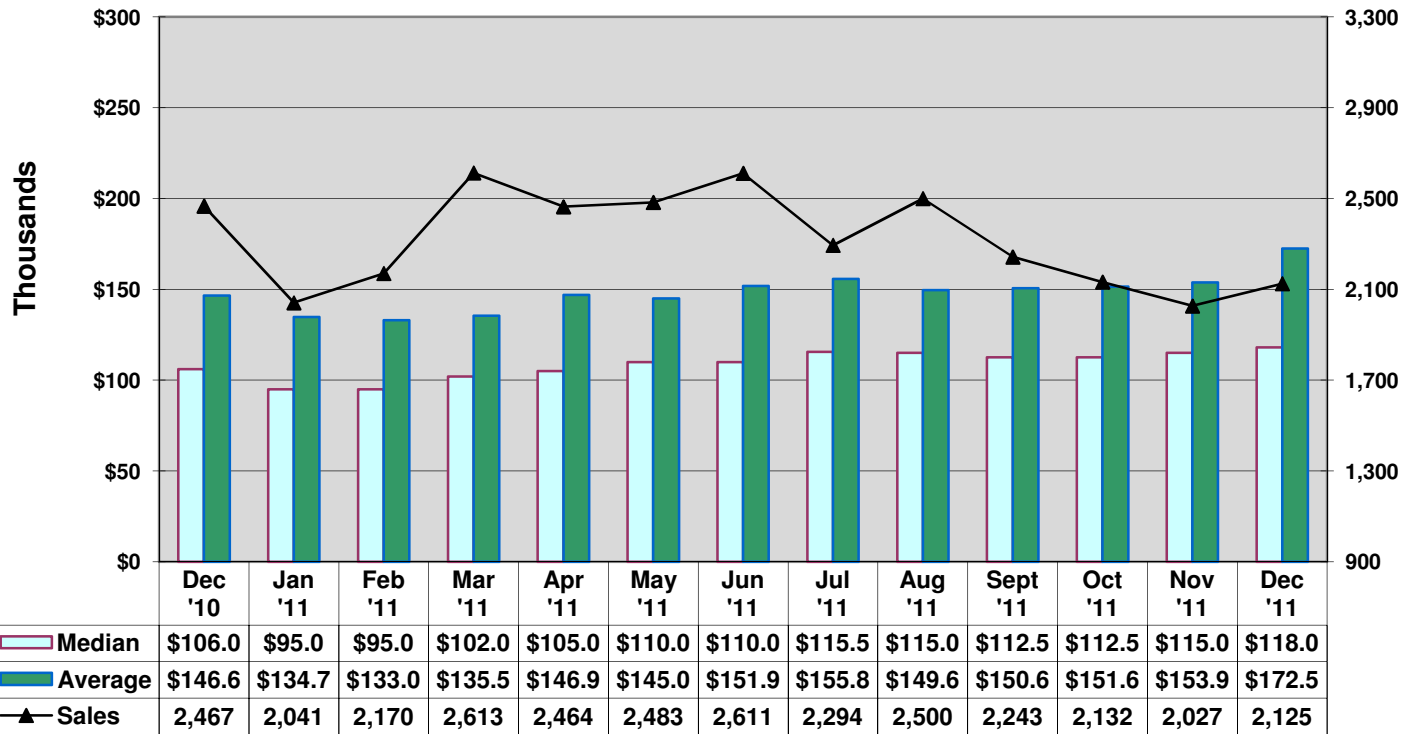
Units off the Market - Withdrawn or Expired



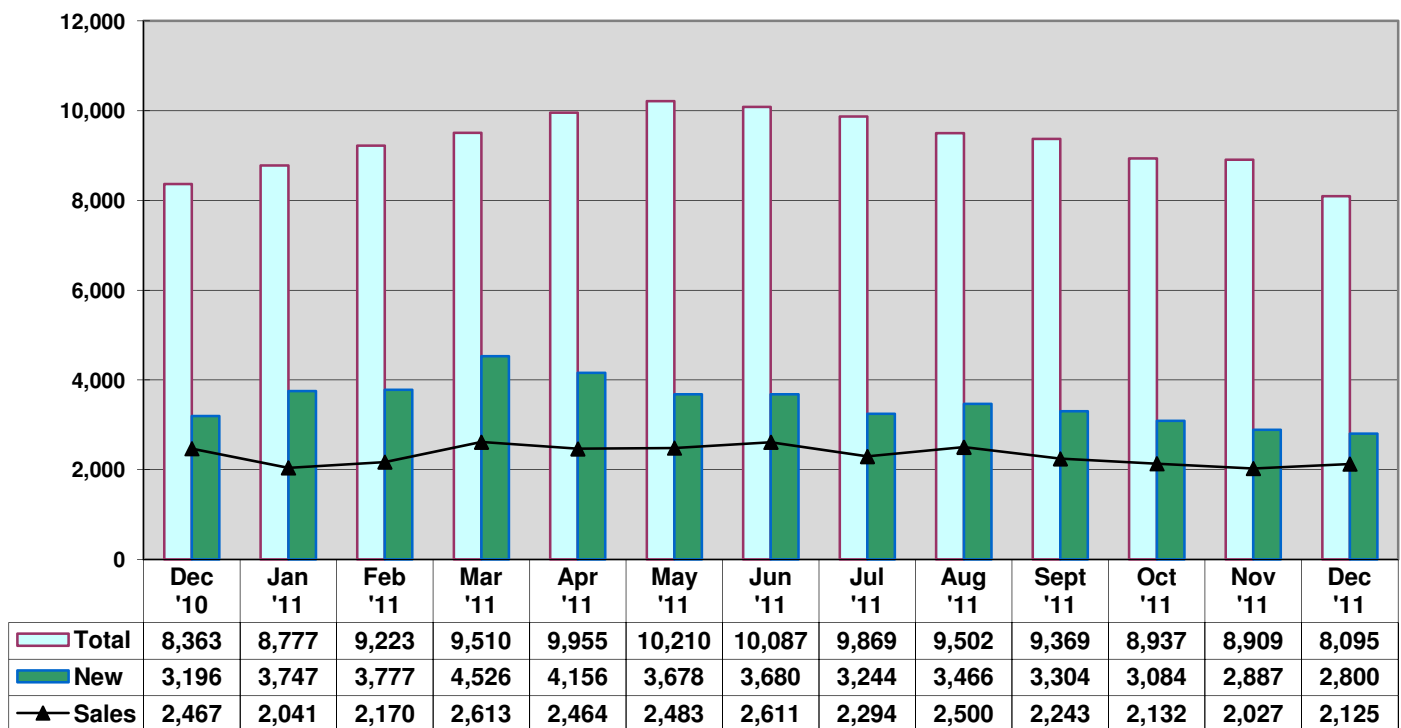
Three-year History - Units off the Market - Withdrawn or Expired



Average vs Median Sales Price vs Sales



Total Contracts vs New Contracts vs Sales



Average Days - Contract to Close

